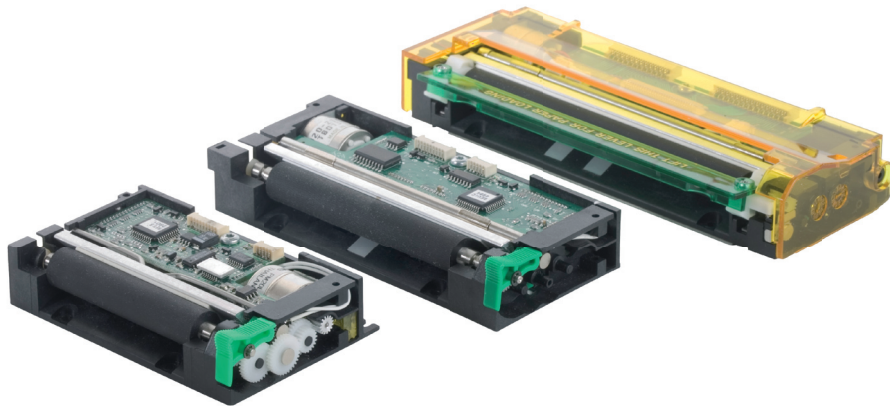


Paper



60 mm
80 mm
114 mm



Features

- 2, 3 and 4 inches paper width
- Compact and light
- Print speed up to 90 mm/s
- Print text graphics and barcode
- Downloadable character set
- Software programmable energy consumption
- Label detection
- Full native and std Windows drivers
- Single power supply
- Zero current sleep mode
- Front/Bottom loading version

Applications

- Gas (petrol) pumps
- Measuring instruments and analyzers
- POS (point of sale)
- ATM machines
- Kiosks, parking meters
- Medical equipments
- Weighing machines, scales
- Ticketing

Specifications	CP290-MRS	CP324-MRS	CP424-MRS
Printing method	Thermal	Thermal	Thermal
Number of dots	432	576	864
Resolution (dots/mm)	8	8	8
Printing width (mm)	54	72	104
Paper width (mm)	60	80	114
Max. paper thickness (μ)	80	80	80
Paper loading	Automatic	Automatic	Automatic
Printing speed	90	90	90
Paper detection	Opto sensor	Opto sensor	Opto sensor
Temperature detection	Thermistor	Thermistor	Thermistor
Head-up or Cover-open detection	Switch	Switch	Switch
Voltage range (Logic/Head)	5 ± 5% / 18-27	5 ± 5% / 18-27	5 ± 5% / 18-27
Weight (g)	70	80	150
Life/reliability	50km/100M pulses	50km/100M pulses	50km/100M pulses
Operating temperature (C°)	0 to 50 non cond.	0 to 50 non cond.	0 to 50 non cond.
Operating humidity (%)	20 to 85 non cond.	20 to 85 non cond.	20 to 85 non cond.
Dimensions (WxDxH mm)	91x55x20	120x55x20	156x55x27
Peak head consumption (A)	1 to 9 programmable	1 to 9 programmable	1 to 9 programmable
Character set	3 resident + downloadable	3 resident + downloadable	3 resident + downloadable
Character size	8x16, 7x16, 12x20	8x16, 7x16, 12x20	8x16, 7x16, 12x20
Characters per line (max.)	48, 24, 12/54, 27, 13/32, 16, 8	64, 32, 16/72, 36, 18/44, 22, 11	96, 48, 24/108, 54, 27/66, 33, 16
Interfaces	RS232C, Centronics	RS232C, Centronics	RS232C, Centronics
Graphics	5 modes	5 modes	5 modes
Barcodes	UPC A-E, EAN 13-8, Code 39, ITF 2/5, Codabar, Code 128 A-B-C		
Drivers	Windows - Linux	Windows - Linux	Windows - Linux
Label/Black mark detection	Y	Y	Y
Zero power mode (sleep mode)	N	N	N
Auto wake-up on received data	N	N	N
Functional keyboard	Y	Y	Y

Options

Guillotine cutter

