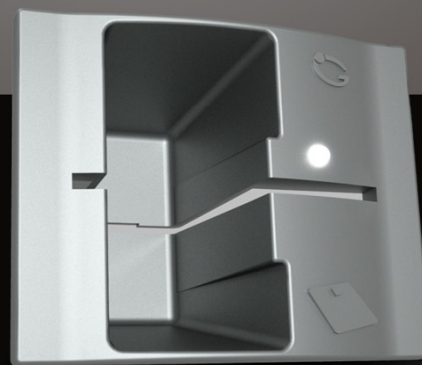


The payment technology at your service.

BV1000, the new automatic payment system.



The compact and low power payment system for unattended sites

BV1000 is an unattended EFTP POS for commercial transactions with credit or debit cards both with chip or magstripe able to satisfy sales of assets or services in pump station, kiosk, vending machines, parking. Mechanical dimensions are EVA Vending requirements compliance . BV1000 is composed of a PinPad and a Reader module.

BV1000K MAIN FEATURES



BV1000K, the PinPad module with IP65, 1K10 and CE, PCI 3.1 conformity

ARCHITECTURE:	Dual ARM Processor 32 bit
MEMORY:	512K internal flash
DISPLAY:	Oled 2,4" Graphic 128x64 dots
KEYBOARD:	16 keys
SIGNALLING:	Magnetic acoustic buzzer
COMMUNICATIONS:	2X RS-232 serial ports
CONFIGURATION:	Automatic
POWER SUPPLY:	5 V DC, 200mA from BV1000 Stand-by 50uA
BATTERY BACK-UP:	Primary Lithium
SIZE:	85,6x108x28 mm (WxHxD)
CUT AREA:	65,5x88 mm (WxH)
WEIGHT:	150 grams
OPERATING TEMP:	From -20° to +65°C
STORAGE TEMP:	From -25° to +70°C
HUMIDITY:	5-95% not condensing
OPERATING SYSTEM:	Open Rtos
CIPHERING:	3DES, RSA, AES128
HOUSING:	Tecno-Polymer
PROTECTIONS:	Tamper evident, resistant, responsive
SECURITY:	Security box for system keys Sign and authentication of loaded applications Life cycles of the device

BV1000R MAIN FEATURES



BV1000R is the Contact and Magstripe Card Reader module with CE, EMV lev.1, EMV lev.2, TQM and PCI 3.1 conformity

ARCHITECTURE:	Dual ARM Processor 32 bit
MEMORY:	512K Internal Flash, 8MByte NOR FLASH, 2MByte PSRAM, 8+2MB Data Flash
MAGNETIC READER:	Traces 1/2/3
CONTACT READER:	Asynchronous/Synchronous Chip Card
SAM READER:	3X SAM module connectors
COMMUNICATIONS:	4X RS-232 serial ports, 1 USB2.0 OTG, 1 Ethernet 10/100 MB, GPRS cl10 quad band (alternative to ethernet), MDB interface (optional)
POWER SUPPLY:	D.C. from 8 to 34V. Power consumption 1W full speed, stand-by <1mW
BATTERY BACK-UP:	Primary Lithium
SIZE:	100x66,3x118,8 mm (WxHxD)
CUT AREA:	74x62 mm (WxH)
WEIGHT:	180 grams
OPERATING TEMP:	From -20° to +65°C
STORAGE TEMP:	From -25° to +70°C
HUMIDITY:	5-95% not condensing
ENVIRONMENT:	IP34, IK10
CIPHERING:	AES128, TDES
OPERATING SYSTEM:	Open Rtos
DEVELOPMENT:	SDK under IAR EWARM
SECURITY:	Security box for system keys Sign and authentication of loaded device Life cycles of the device Mutual authentication and ciphering towards the PinPad module Report system event

Master Payment Partner



203A E. Main St. | Middletown MD 21769 | 1-800-342-9798
www.CURCOMP.com



Globalcom Engineering srl
info@globalcom-eng.com
www.globalcom-eng.com